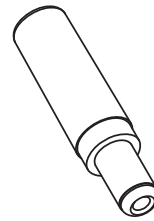
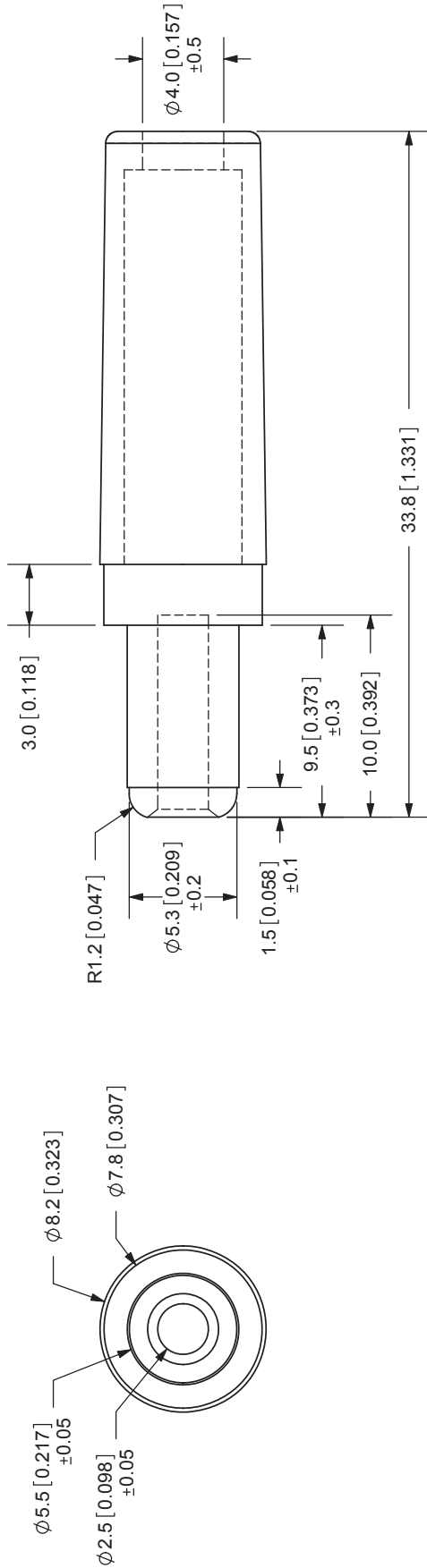


REV.	DESCRIPTION	DATE
A	NEW DRAWING	3/10/2006
B	Added tolerances	8/17/2006



SCALE 1:1

SPECIFICATIONS:
 RATING: 24V DC @ 5A
 OPERATING TEMP: 0° ~ +40°C

	MATERIAL	PLATING
BARREL	Brass	Nickel
INSULATOR	POM	Black Color
HOUSING	ABS	



TOLERANCE:
 ±0.2mm UNLESS OTHERWISE
 SPECIFIED



CUI INC

20050 SW 112th Ave.
 Tualatin, OR 97062
 Phone: 503-612-2300
 800-275-4899
 Fax: 503-612-2383
 Website: www.cui.com

TITLE: DC PLUG	REV: B
PART NO: PP3-002B	UNITS: MM [INCHES]
DRAWN BY: ZRJ	APPROVED BY:
	SCALE: 3:1